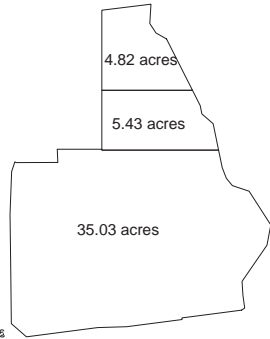


POSSIBLE FUTURE DEVELOPMENT

| | |
|---------------------------------|----------------|
| FOOTPRINT: | 100,000 SQ.FT. |
| COVERAGE: (based on 4.82 acres) | 47.60 % |
| LOADING DOCK DOORS | 10 doors |
| DRIVE-IN DOORS | 2 doors |
| CAR PARKING SPACES | 91 spaces |

POSSIBLE CAR/TRAILER PARKING
AREA = 5.43 ACRES

| |
|---|
| 249 CAR PARKING SPACES |
| 138 TRAILER PARKING STALLS (INCLUDING 8 TANDEM STALLS) |

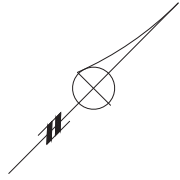
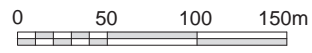


LAND BALANCE DIAGRAM

| | |
|--|-------------------|
| DEVELOPED SITE AREA: | 35.03 ACRES |
| PRESENT ZONE: | AP (AIRPORT ZONE) |
| FOOTPRINT: | 765,000 sq.ft. |
| COVERAGE: (based on 35.03 acres) | 50.13 % |
| LOADING DOCK DOORS | 145 doors |
| DRIVE-IN DOORS | 4 doors |
| TRAILER PARKING STALLS (3.0 m x16.0 m) | 127 stalls |
| CAR PARKING SPACES | 325 spaces |

SITE PLAN

JAN 04, 2016
OPTION 2 d



PROJECT COORDINATOR:



Suite 200, 185 Adesso Drive, Concord, Ontario L4K 3C4
Tel (905) 738 9673 Fax (905) 738 9190

PROPOSED INDUSTRIAL DEVELOPMENT FOR



DERRY ROAD EAST AND BRAMALEA ROAD

CITY OF MISSISSUAGA